

SETU BABAKAN - building an innovative model of sustainability

Group 1: UI - UF- CU

January 21, 2016

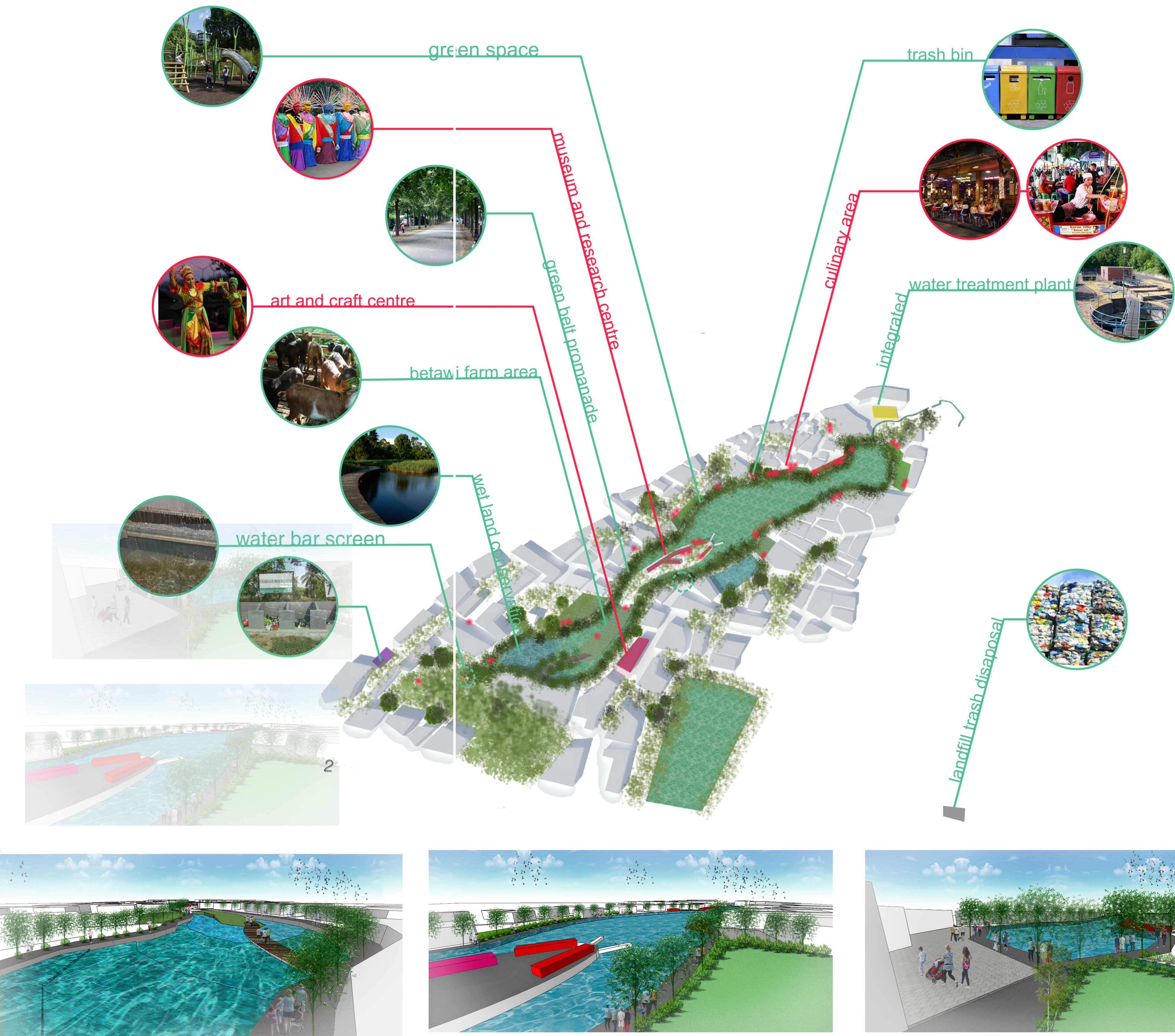
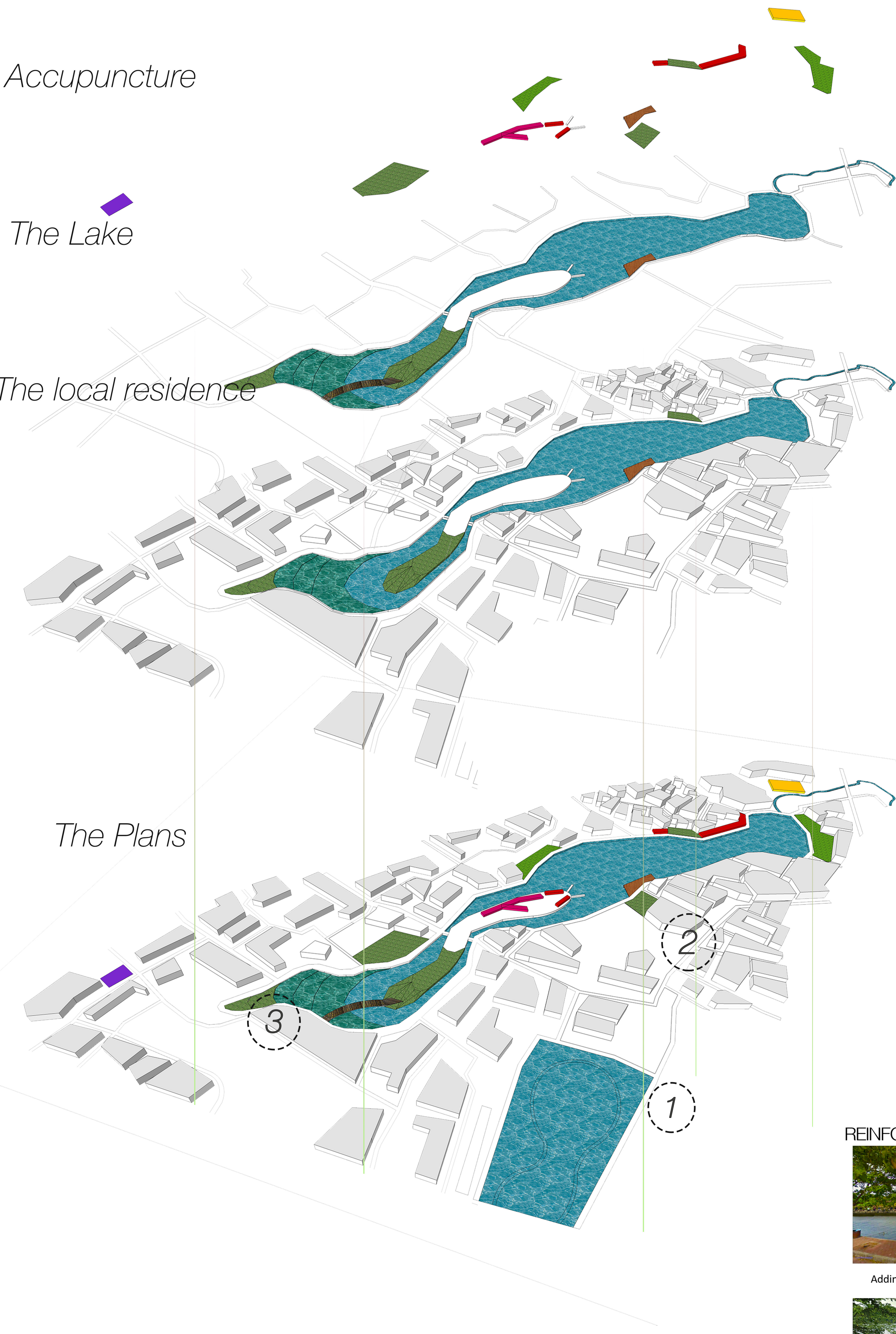


Accupuncture

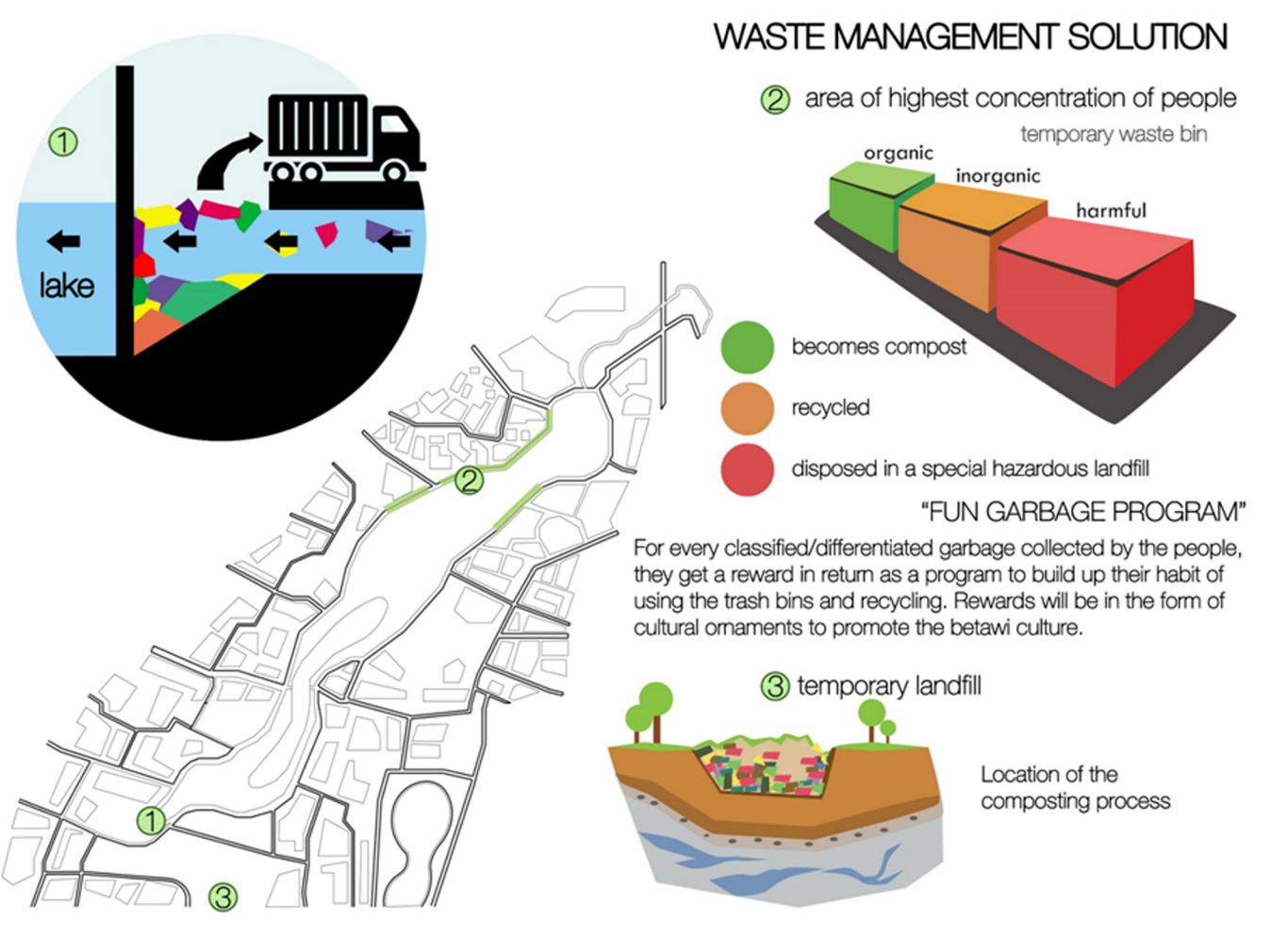
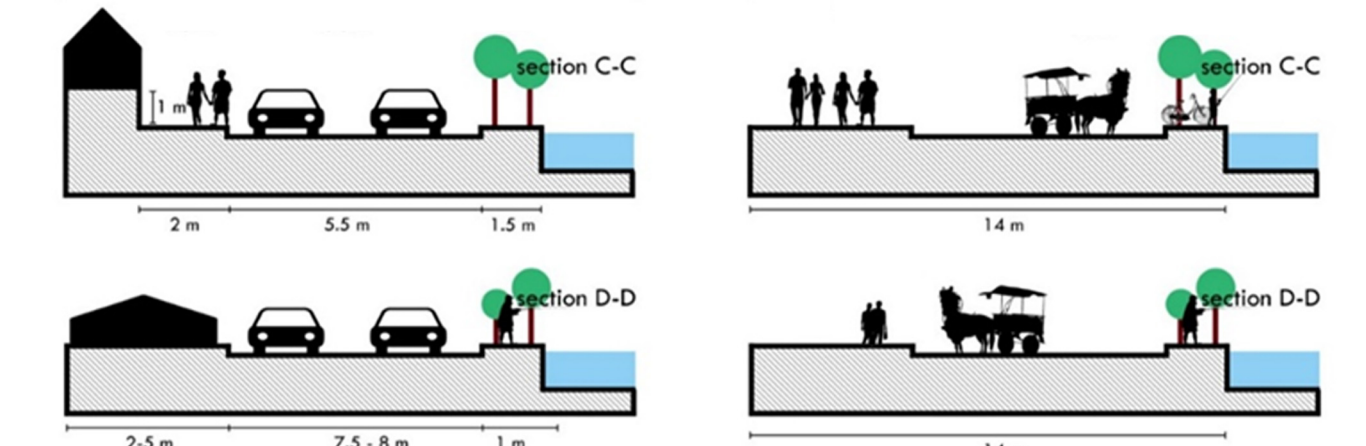
The Lake

The local residence

The Plans



open space & circulation

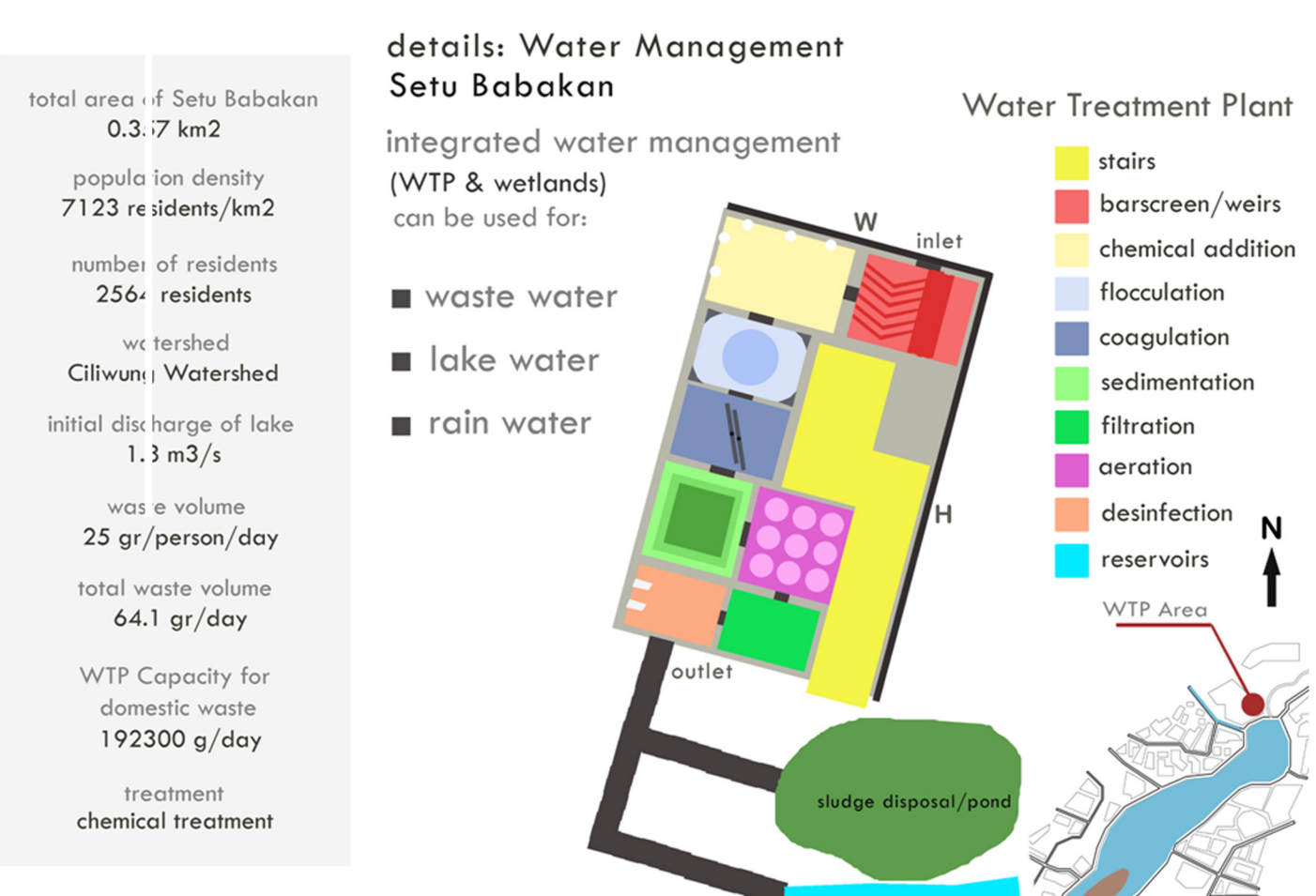


conclusion

REINFORCING BETAWI CULTURE



intervention for culture issue



building the innovative and sustainable model

ASPECTS	RECOMMENDATIONS
SOCIO-CULTURAL	LINK CULTURAL AND PERFORMANCE SPACES WITH NATURE
	ENGAGEMENT COMMUNITY IN CULTURAL ACTIVITIES (dance, arts and crafts, performances)
	CREATION OF RECREATION AREAS FOR THE COMMUNITY (playgrounds, places for exposing their craft)
	EDUCATING THE POPULATION IN BATAWI CUSTOMS (farm, museum) AND NATURE CONSERVATION (research centre)
ECONOMIC	POLICY REGULATING THE ARCHITECTURAL STYLE AND DESIGN
	BOTTOM-UP CREATION OF AN ADVISORY COMMITTEE TO ENGAGE IN DECISION-MAKING
	ENHANCEMENT OF TOURISTIC FACILITIES (restaurants, promenades, landscape)
	INCREASEMENT OF LOCAL JOB OPPORTUNITIES THROUGH FOMENTING TOURISTIC ECONOMY
ENVIRONMENTAL	CREATION OF CONTINUITY IN ATTRACTION EPICENTRES IN THE AREA
	CREATION OF A WETLAND TO INCREASE WATER QUALITY
	IMPROVEMENT OF THE WATER AND SEWAGE TREATMENT PLANT
	ENHANCEMENT OF WASTE DISPOSAL SYSTEM
ENVIRONMENTAL	NEW GREEN INFRASTRUCTURE DEVELOPMENT IN THE AREA

