

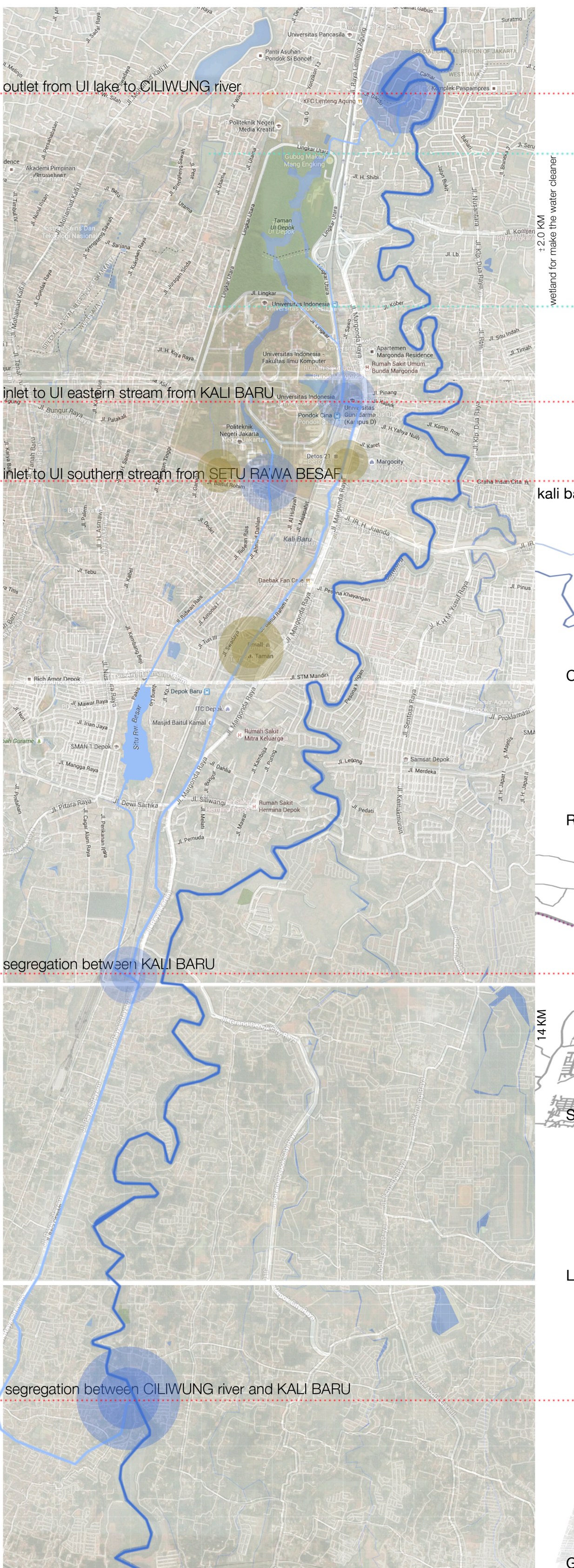
LIVING ON BLUE + GREEN SPACE

Heriatma(UI), M. Nur Iohsan(UI), Rezqi A.(UI), Ayu Ashari(UI), Valery D.(UI), Amanda L.(UI), Ayu Ashari (UI), Meng Xia(CU), Zixian Liu(CU), Chang He(CU), Shiqi Tian(CU), Mushab A.(UI), Gandes P.(UI), Avi Sovia(UI), Nindita(UI), Safira M.(UI), Yiyi Zheng(CU), Shasa Xu(CU), Shihan Xue(CU), Xueting Wang(CU),

January 21, 2016



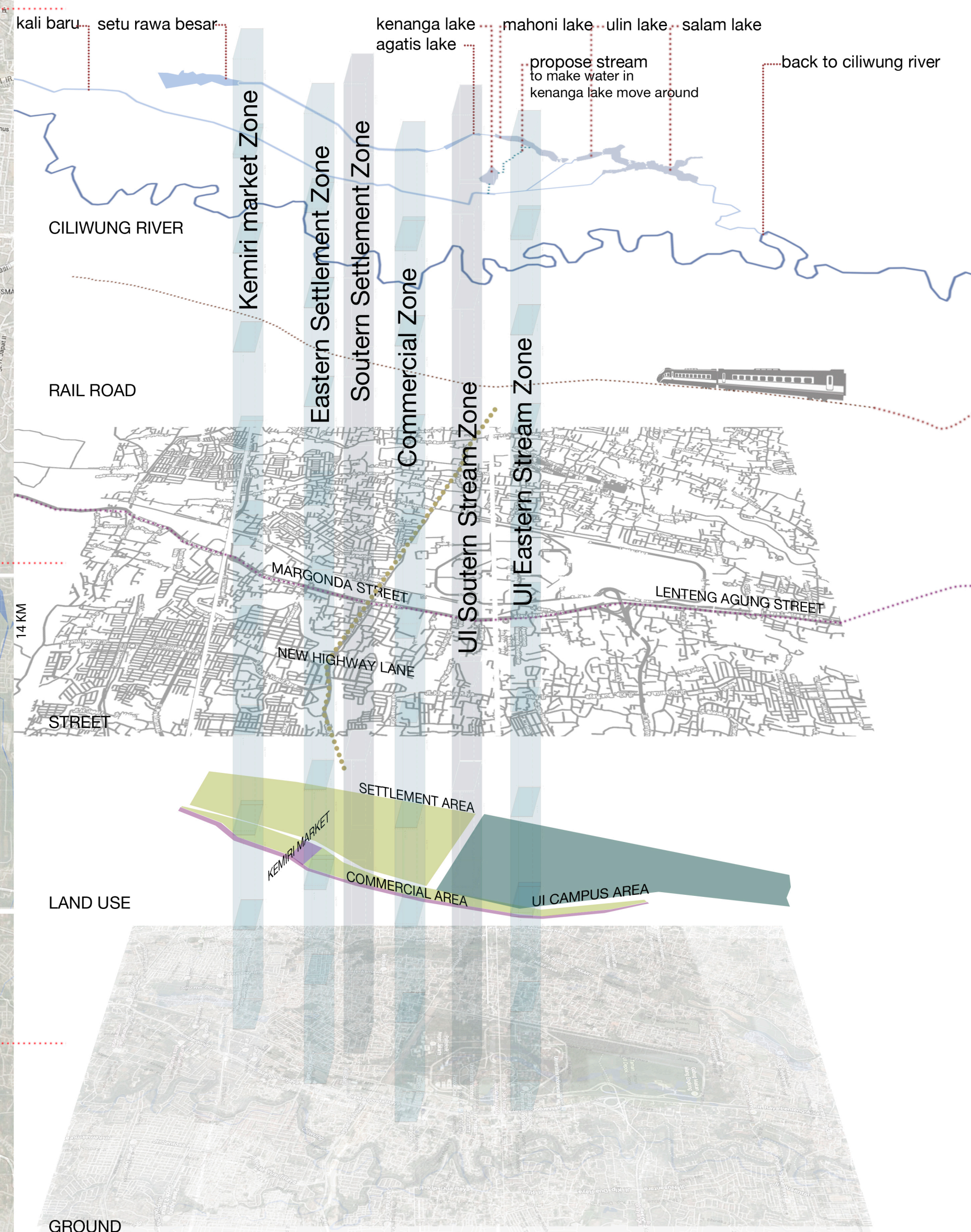
INTRODUCTION



Through overview of previous literatures and several on-site investigations, it was discovered that there are two upstreams, and they had different pollution sources. For instance, life waste and grey-black water are the most significant pollution sources in riparian area around Agathis lake and neighborhoods site before it. Additionally, Kemiri Muka market is the most significant source of pollution in riparian area around Kalibaru river. Thus, we divided into two separated groups, and each group selected one of the rivers as indicators to explain how to use physical design and implement social/community engagement to improve the current situation.

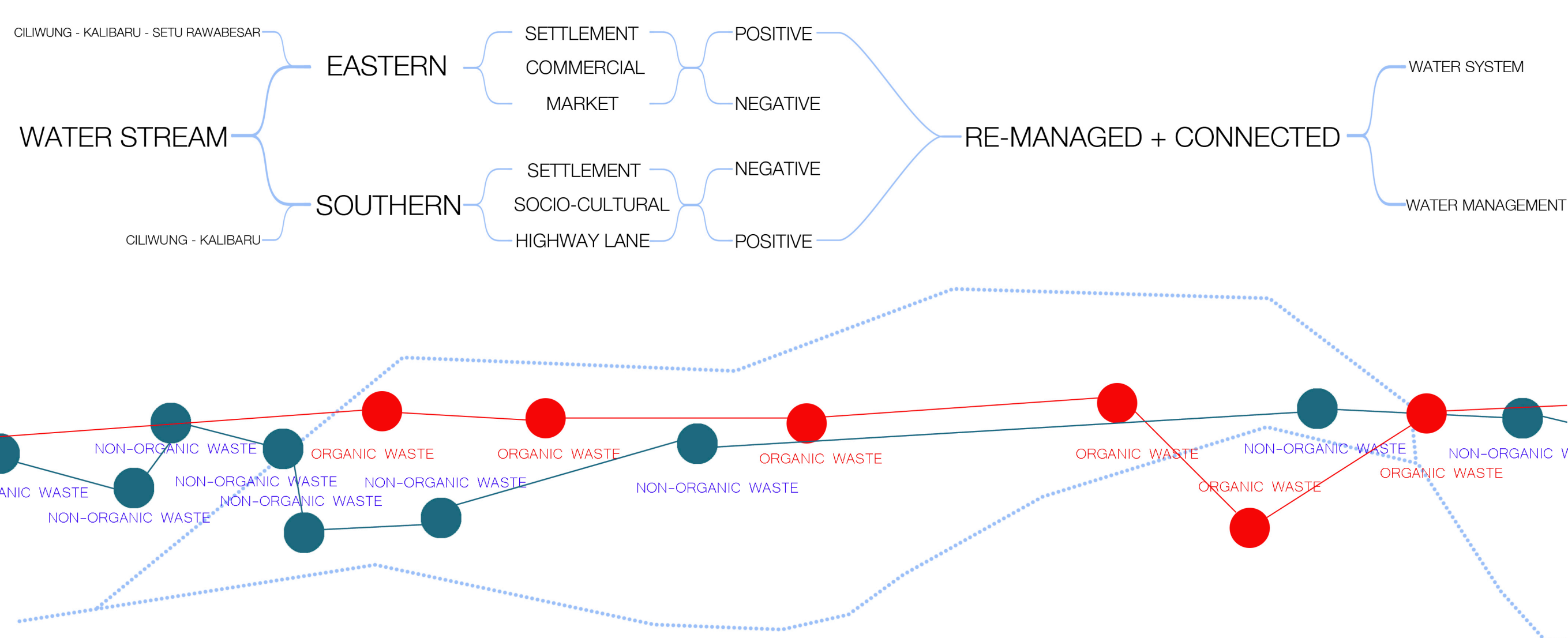
The goal of this project is to implement a dynamic water quality and system surrounding University of Indonesia (UI) campus. Firstly, it is necessary to investigate the locations and explore current conditions. Secondly, we summarize the diverse issues and select the key focus of the project. Finally, we analyze the issues and give suggestions for future actions.

The hypothesis is that the entire water system would be more dynamic if the rivers are re-managed and connected with the lake.



HYPOTHESIS

This project design and research hypothesizes that the whole water system and management would be more dynamic if both eastern and southern upstream areas are re-managed and connected with the UI campus lake. Various circumstances in sites recently have positive and negative aspects, and to is to consider .



PARTICIPANTS

Mr. Sumantri as neighborhood leader (Rukun Tetangga) of RT 1 West Beji, inhabitants formal-informal resident, government

Having deal with land policy situations, we also divide the form its legality, to define formal inhabitants who have land certificates and informal inhabitants.

- market seller
- various ages residents/inhabitants of RT 15/16 Beji
- neighborhood leader
- Mr. Syamsudin, political-environment activist
- commercial area inhabitant
- market formal security



METHODS

Our research and design is conducted in both qualitative and quantitative approaches (mixed method) involving the dynamic site developments.

Literatures Review

Various resources are studied to support first general comprehension of the sites. Primary resources are taken directly from survey and interviews, and secondary ones are taken from digital and printed medias such as academic journals, newspapers, UI Campus Masterplan from 1985, 1997-2003 and 2008, Depok & Jakarta City Masterplans, previous projects/research involving the sites, and Panduan Pengguna Bangunan Gedung Hijau Jakarta Vol. 5-6 by DKI Jakarta Government.

Preliminary Site Visit & Observations

Site visits are necessary in order to compare literature with actual conditions and to find unique and potential characteristics that are not readily apparent. The large site area is divided between group members with similar data requirements to simplify the process. Data collections are provided in photographs and digital sketches.

In-depth Interviews & Questionnaires

The second site visit is conducted to develop a more detailed understanding of the site. Specific attitudes, behaviors and perceptions of individuals are taken through interviews and questionnaires. The results will be translated into form of design.

Focus Groups Discussion (FGD)

Discussions are held between the two groups to achieve holistic understanding of the sites and to analyze issues together in both upstream creeks.

Findings & Data Analysis

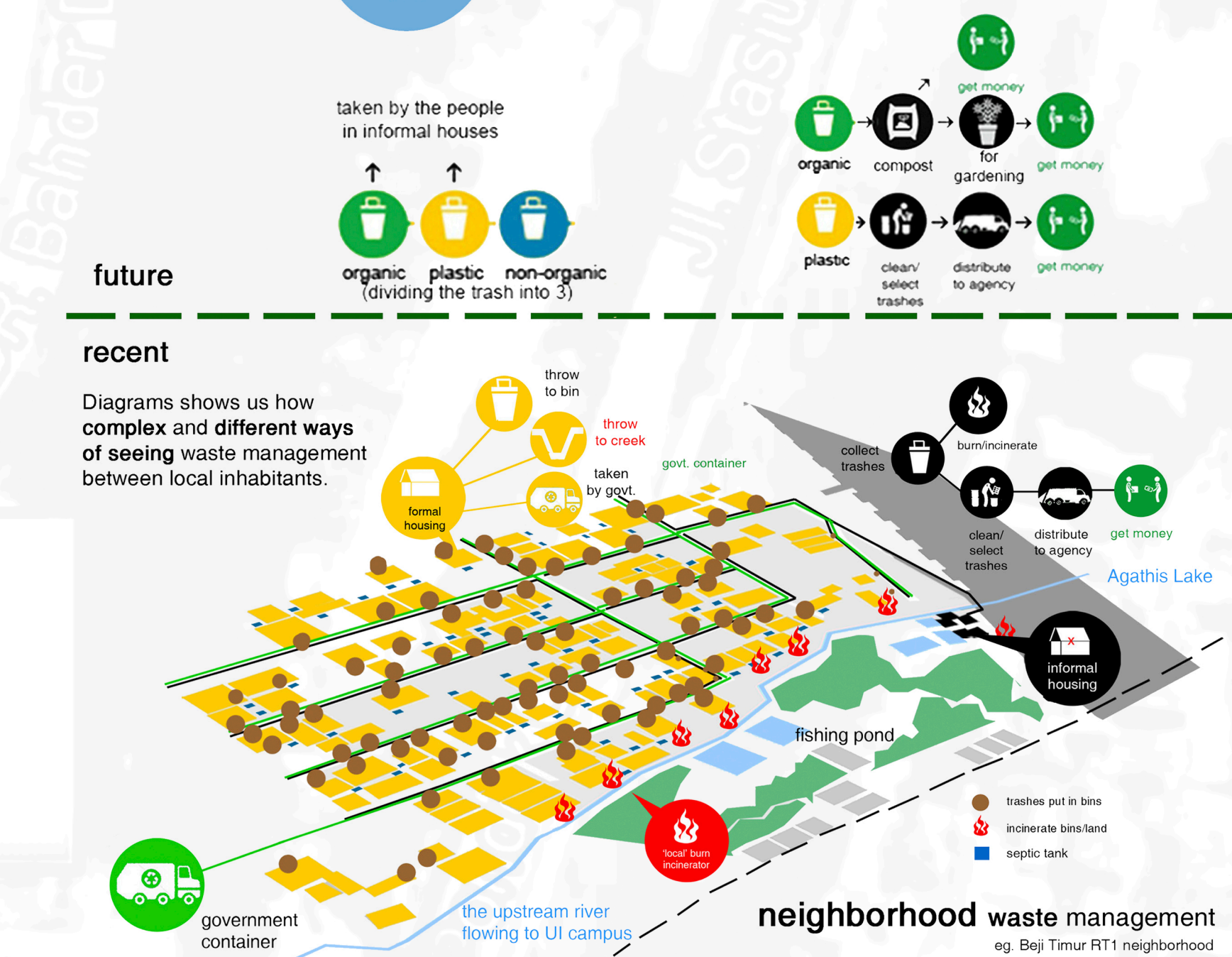
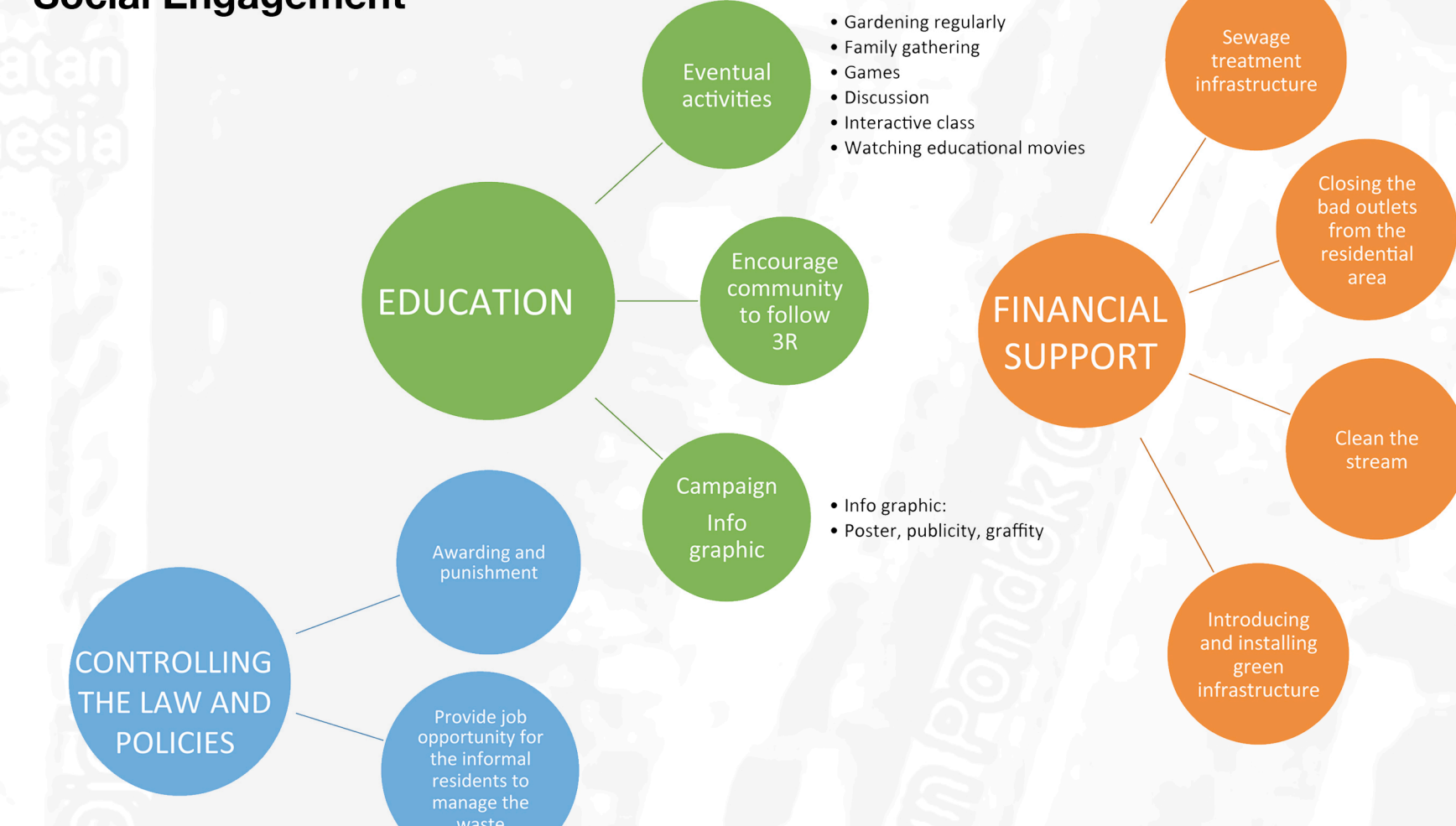
Several analyses from waste management to community engagement to policy intervention.

Keywords & Solutions

Keywords are to summarize complex ideas through design-based and policy approaches. This generates holistic solutions to key water management issues.

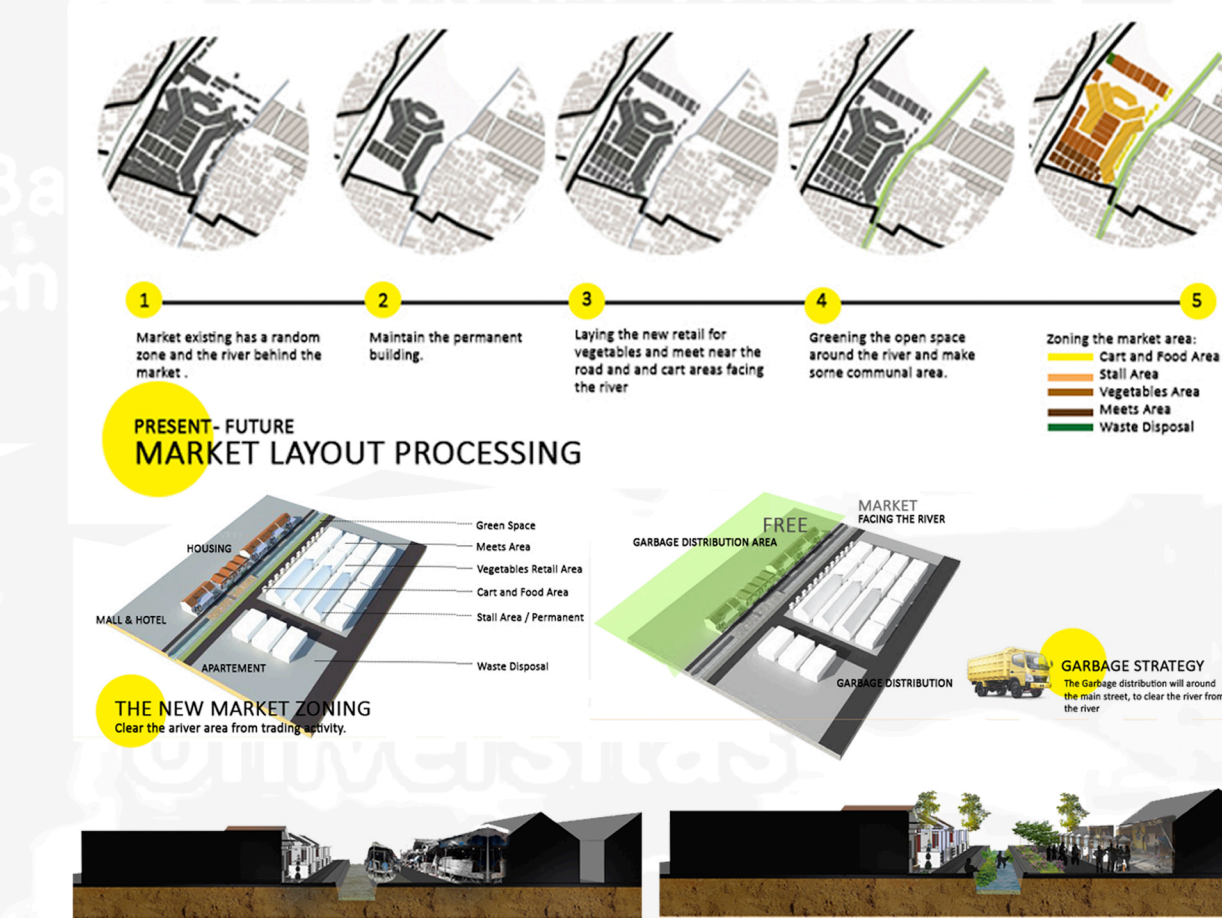
RESULTS

Social Engagement



Design Engagement

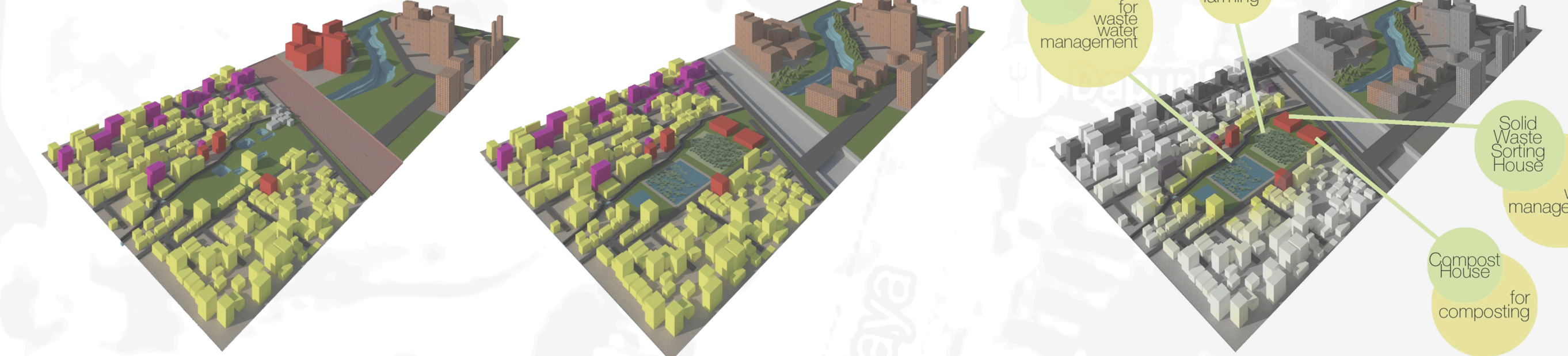
Kemiri Market Zone



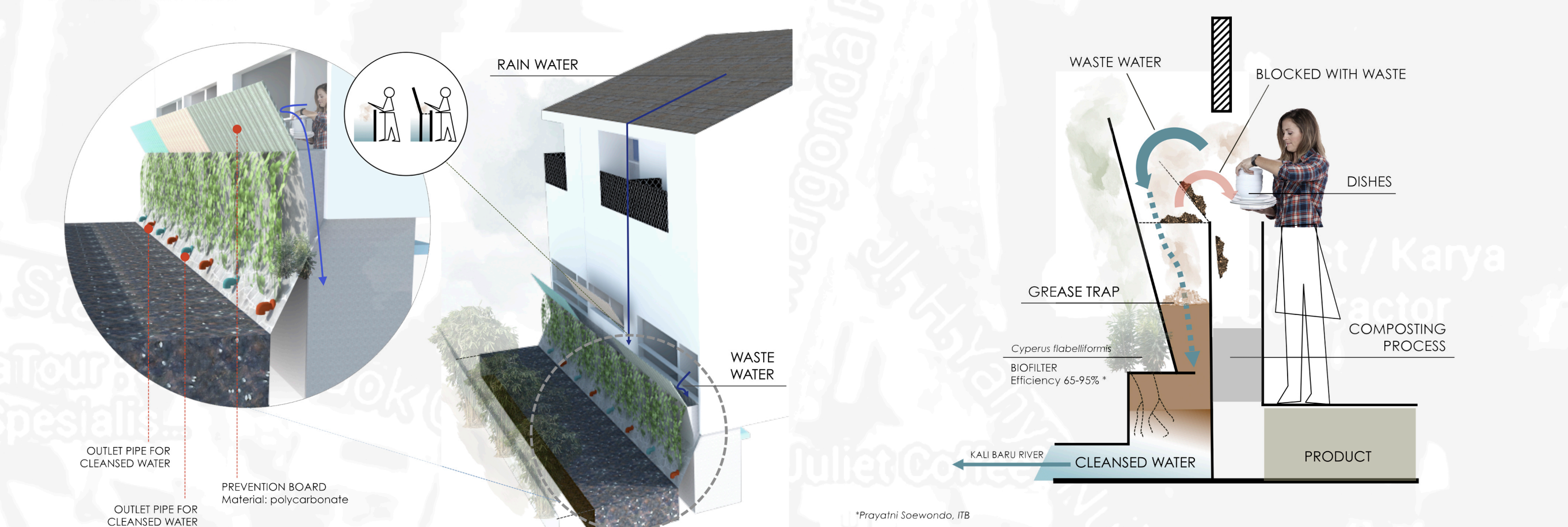
Eastern Settlement Zone



Southern Settlement Zone



Commercial Zone



UI Campus Zone



CONCLUSIONS

Through analysing the current situations and proposing the solutions, there are three main findings. Firstly, it can be discovered that there are some similar object issues in different locations such as the adjacent river to the houses. Thus, the proposal for commercial area can also be used in the riparian area of Agathis river. Secondly, through investigation with questionnaire there are also some same subject problems such as low awareness of wastes management. Therefore, the social suggestions can also be implemented in the riparian area of Kalibaru river. Thirdly, the implementation of those solutions should depends on public and government support and policies. And also there some problem of the integration between informal and formal that we also find in many neighborhood near the river. Otherwise, all the solutions should have their specific characters due to each physical features.

REFERENCES

UI Campus Masterplan from 1985, 1997-2003 and 2008 In *Rencana Induk UI Depok* by Gunawan Tjahjono et al, 2015.
Depok & Jakarta City Masterplans
Panduan Pengguna Bangunan Gedung Hijau Jakarta Vol. 5-6 by DKI Jakarta Government.
<https://www.google.com/maps/@6.3870842,106.8259597,409m/data=!3m1!1e3>
<http://mapstack.stamen.com/edit.html#watercolor/16/-6.3505/106.8373>