

LIVING SIDE BY SIDE WITH SETU RAWA BESAR

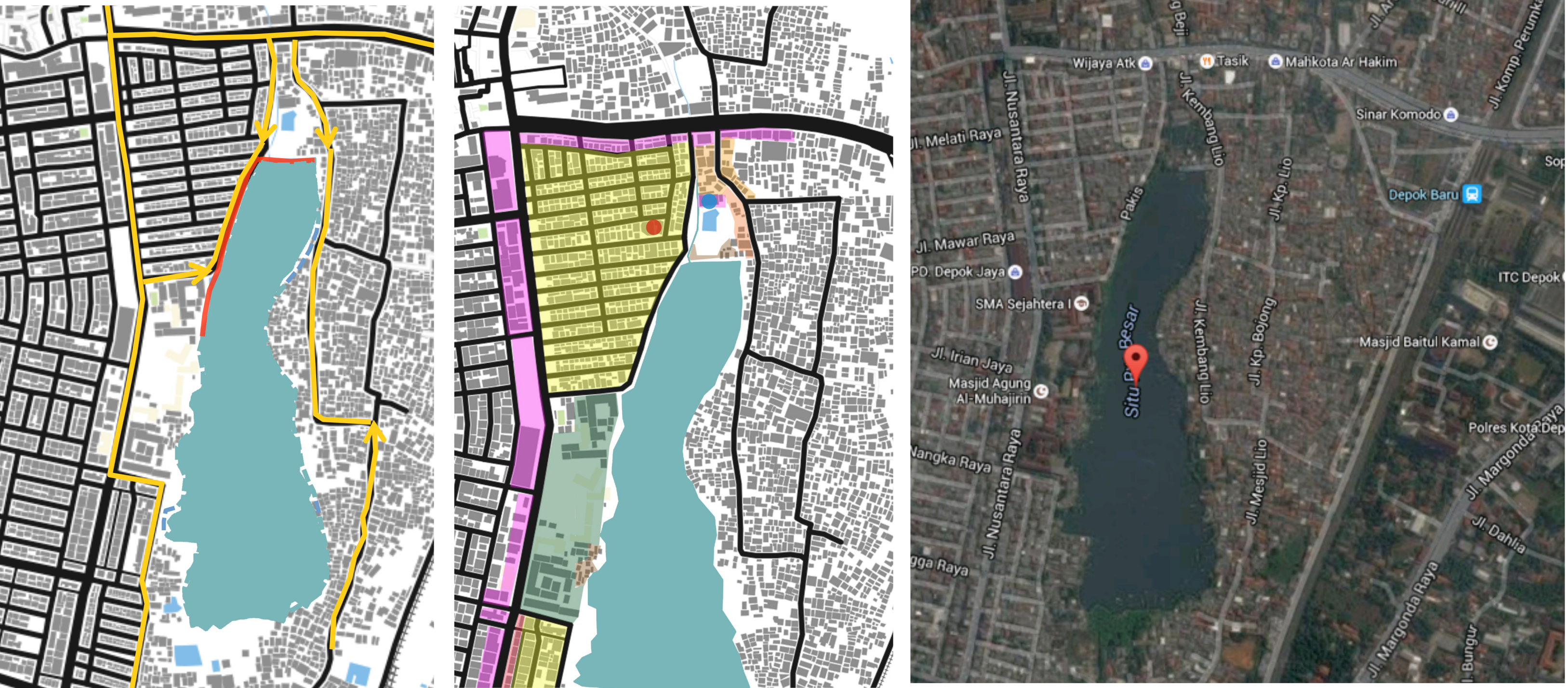
TURNING THE WATER TO OPPORTUNITY

Cardiff University (Daren Wang, Gaoli Zhu, Haoran Zhang, Linjun Xie, Nanqi Ye, Qingtao Li, Siqi Huang, Weiyei Cui, Wenjun Hu, Yaotian Wang)
Universitas Indonesia (Afif Muhammad, Afifah Karimah, Bella Septianti, Dany Fauzan, Farah Nabilla P., Istiqamah, Maulina, Nisrina Muthi Meidiani, Reza Yuniar Sandi, Tri Damayanti)
University of Florida (Alyssa Henriquez)



January 21, 2016

INTRODUCTION & BACKGROUND



SETU RAWA BESAR

setu rawa besar is located in the golden triangle area of Depok in which has the potential as a tourist destination and living quarter, not only appear as visual pleasure, this setu should also play its role to manage the flood in the area.

EXISTING LAND USE

- setu rawa besar
- formal housing (perummas)
- informal housing
- formal housing
- schools
- retails
- retails

LOCATION: setu rawa besar, Depok

AREA: 16.5 Ha (2015) 30 Ha (20th Century)

WATER QUALITY (BLH):

- COD (Chemical Oxygen Demand) 36,70 mg/liter (6 mg/liter)
- BOD (Biological Oxygen Demand) 93,58 mg/liter (50 mg/liter)

USAGE:

- flood control
- irrigation
- fisheries
- water spring

CONSERVATION EFFORTS DONE:

- sedimentation dredging
- retaining walls
- waste filtering and pick up

ACCESSIBILITY

- water boundaries
- vehicle access
- pedestrian access

post

- settlement
- pollution
- industry
- etc

present

- lost connection
- if still no connection, what will happen?
- flood, env. degradation, etc
- keep the connection, what will happen?

living side by side with setu rawa besar

programme

- setu to people
- people to setu

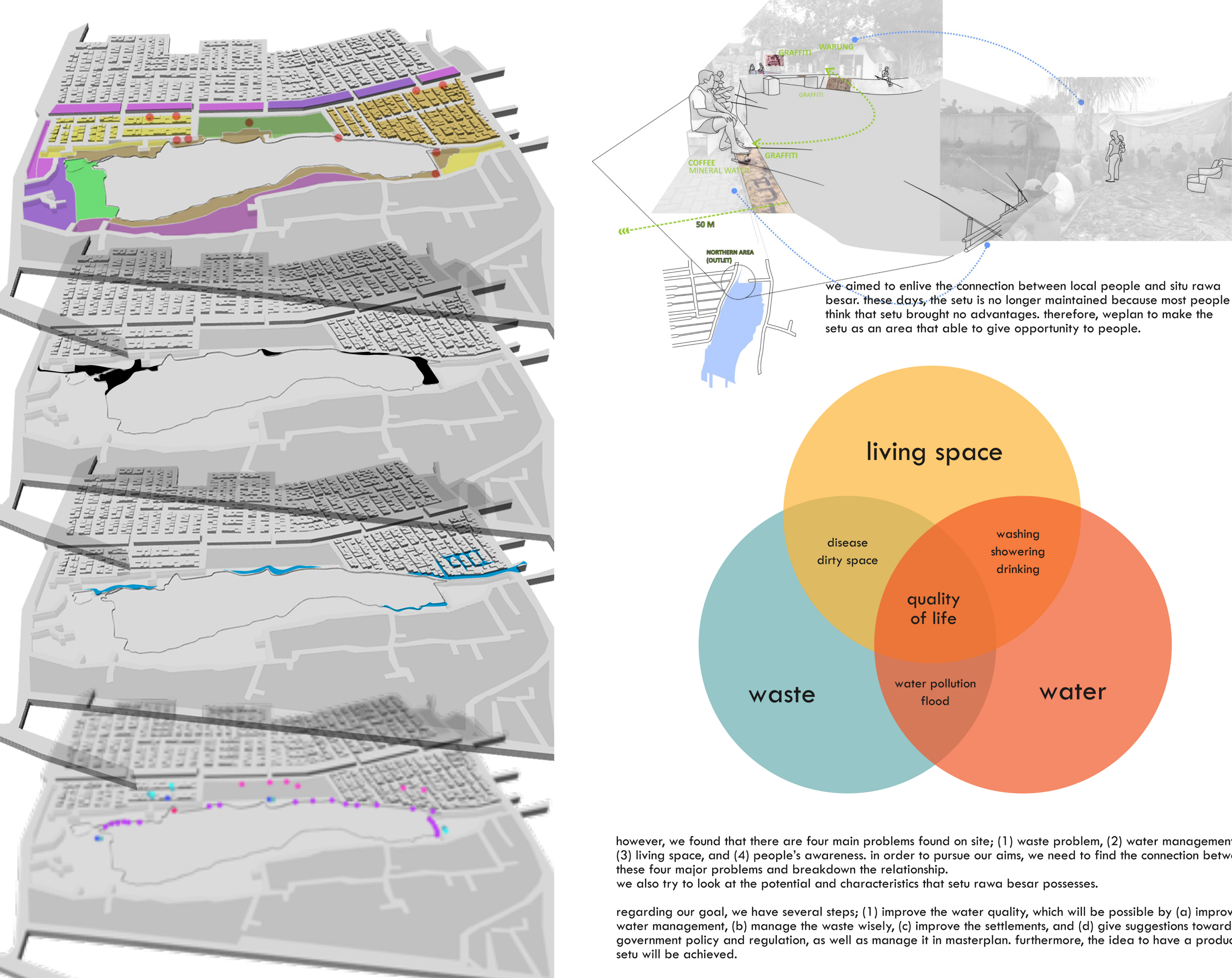
setu to people

- leisure
- economic
- from fishing
- from small shops
- job as caretaker of setu

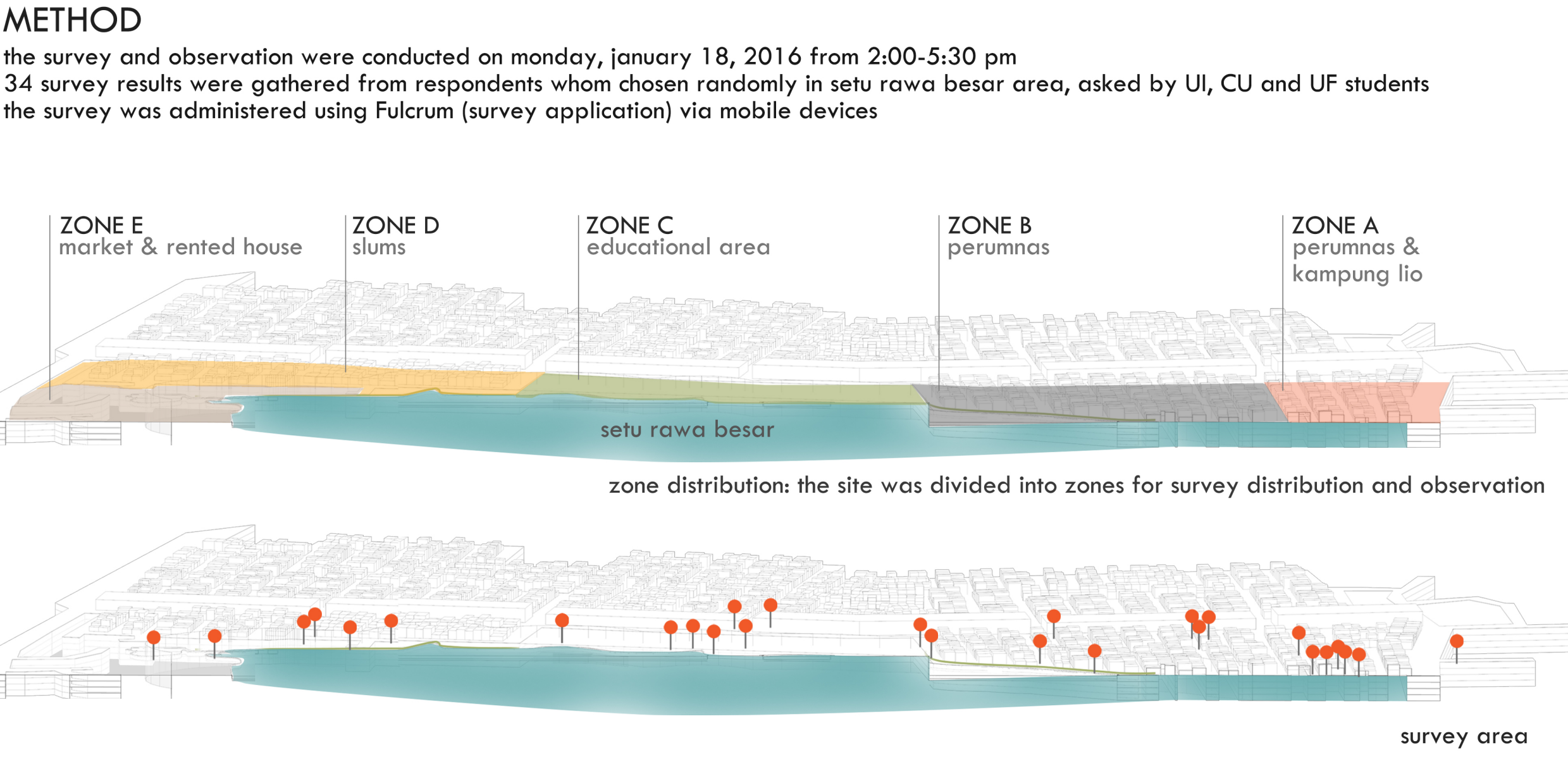
people to setu

- protect and be responsible
- towards setu's condition

HYPOTHESES & PREVIOUS ANALYSIS



PARTICIPANT & METHOD



RESULTS

after we try to identify problems in the area, there are three things we decided to focus on; the water, waste, and living space. to improve the quality of those three, we use the management system then adjust them to the characteristic of the site

